

South Africa

(Durban)

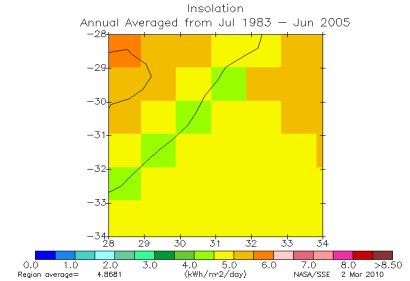
Average score 71%

Highest 126%
Lowest 38%

Practical effect to be expected of SolarDrive S2E (200 W)

Trail type - golf course	18 holes	kWh	Flat	Hilly	Mount.
Consumption			0.80	1.10	1.60
Power production	High (best month)	kWh	1.01	1.01	1.01
PRP* supplied by SolarDrive S2E	High (best month)	kWh	126%	91%	63%
Power production	Low (weakest month)	kWh	0.61	0.61	0.61
PRP* supplied by SolarDrive S2E	Low (weakest month)	kWh	76%	56%	38%
Power production	Yearly Average	kWh	0.78	0.78	0.78
PRP* supplied by SolarDrive S2E	Yearly Average	kWh	98%	71%	49%

*Percentage of Required Power



Basic data

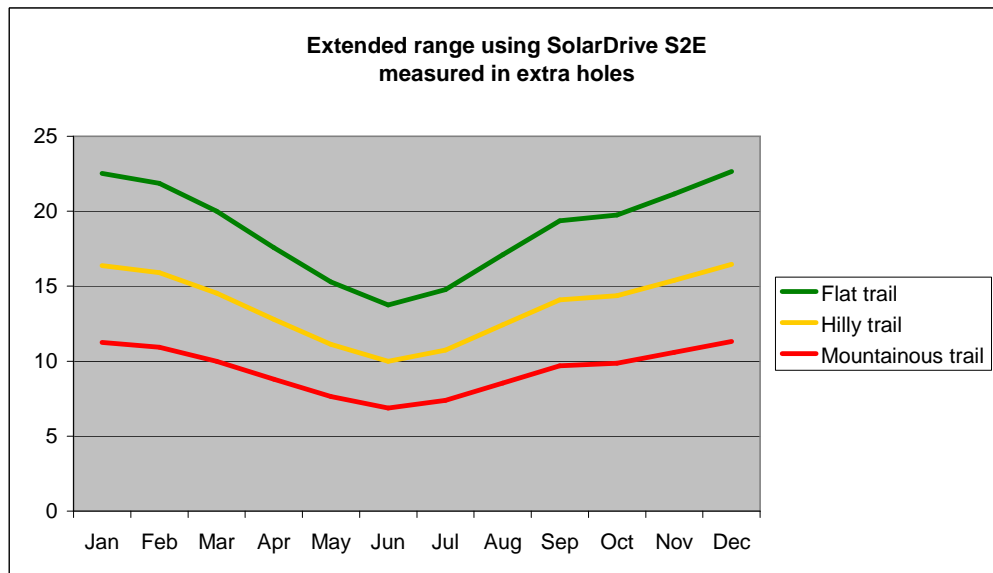
Nominal effect	kW	0.200											Lat.	-29.5	Lon.	30.5
Solar insolation		Jan	Feb	Mar	Apr	May	Jun	Jul	Aug	Sep	Oct	Nov	Dec	Average		
kWh/m2/day**		5.67	5.51	5.03	4.40	3.81	3.40	3.65	4.25	4.84	4.93	5.30	5.69	4.70		
Avg. day temperature (C)		25.4	25.6	25.1	23.6	22.0	19.6	19.5	21.3	22.9	22.7	23.7	24.7	23.0		
Avg. day temperature (F)		77.7	78.1	77.2	74.5	71.6	67.3	67.1	70.3	73.2	72.9	74.7	76.5	73.4		
Temperature loss factor		0.94	0.94	0.94	0.94	0.95	0.96	0.96	0.95	0.95	0.95	0.94	0.94	0.89		
System loss factor		0.94	0.94	0.94	0.94	0.94	0.94	0.94	0.94	0.94	0.94	0.94	0.94	0.94		
Expected output kWh		1.00	0.97	0.89	0.78	0.68	0.61	0.66	0.76	0.86	0.88	0.94	1.01	0.78		

Percentage of consumption driving 18 golf holes on

	Jan	Feb	Mar	Apr	May	Jun	Jul	Aug	Sep	Oct	Nov	Dec	Average
Flat trail	125%	121%	111%	98%	85%	76%	82%	95%	108%	110%	118%	126%	98%
Hilly trail	91%	88%	81%	71%	62%	56%	60%	69%	78%	80%	86%	91%	71%
Mountainous trail	63%	61%	56%	49%	42%	38%	41%	47%	54%	55%	59%	63%	49%

Additional golf holes using SolarDrive on Top

	Jan	Feb	Mar	Apr	May	Jun	Jul	Aug	Sep	Oct	Nov	Dec	Average
Flat trail	23	22	20	18	15	14	15	17	19	20	21	23	18
Hilly trail	16	16	15	13	11	10	11	12	14	14	15	16	13
Mountainous trail	11	11	10	9	8	7	7	9	10	10	11	11	9



Potential CO2 savings/car/year* 142 to 243 kilos or 313 to 537 lbs.**

**Source: NASA Langley Research Center Atmospheric Science Data Center (22 year average)

***CO2 savings are calculated compared to grid electricity supplied from modern power plants burning fossil fuels (0.49-0.85 kg CO2/kWh)

****If battery charge level is low from the start the S2E must be allowed the necessary time to charge as the energy is accumulated over the day

Disclaimer:

SolarDrive takes no responsibility for the correctness of the basic data obtained from the National Aeronautics and Space Administration (NASA), nor for the actual experienced results. The figures above are presented as a guideline only. Actual results may be influenced by many other varying factors such as length of course, altitude, seasonal and present weather conditions, time of year and day, shading (e.g., from buildings, houses, trees, mountains) and regular or irregular maintenance routines of the batteries and golf car.